



Bassetlaw
Place-Based
Partnership

February Half Term in Bassetlaw

Information, Activities & Support





Bassetlaw
Place-Based
Partnership

Welcome to the Bassetlaw Support Booklet: Your Guide to Half-Term Health & Happiness

As families across Bassetlaw prepare for the upcoming school holidays, we understand that finding accessible support and engaging activities can sometimes be a challenge. That's why we've created this comprehensive booklet—to serve as your go-to resource for navigating the half-term break as positively as possible.

Within these pages, you'll discover where to access support services as well as a range of free or low cost activities tailored to the different interests of families in our community.

From swimming times to museum events, we've collated a collection of options designed to make your half-term experience fulfilling and enjoyable without breaking the bank.

Whether you're seeking assistance, looking for inspiration, or simply exploring new places to go for family fun, the Bassetlaw Half-term Support Booklet is here to help.



Contents

Cost of Living Support
Nottingham Festival of Science & Curiosity
Clumber Park
Manton Events
Idle Valley
Swimming Times
Museum of the Horse
Walks of Life Museum
Local Play Parks
From the Heart Charity
Savoy Cinema Kids Club
Help and support
LGBT History Month
Cancer
Children's Health
Coming Soon



Bassetlaw
Place-Based
Partnership

Cost of Living Support



www.bcv.org.uk/colbassetlaw

The Bassetlaw Cost of Living support page contains information and guidance around the support available in Bassetlaw in relation to the Cost of Living.

This includes information about where you can get help in relation to money and finance concerns, housing, energy, families, clothing, food and more.

Food Support

The following food support will be available during the half-term break based at Harworth, Worksop and Langold.

February 2024 Half-Term Food Support in Bassetlaw



Monday 12th February
Devonshire Rd, Harworth
2.00pm - 2.30pm
£5 for the first ever bag, and then £3.50 per bag



Tuesday 13th February
Lime Tree Nursery
12.45pm - 1.15pm
£3.50 per bag



Tuesday 13th February
10.00am - 12.00pm
Free pancake making and activities at Manton Club



Food Hub & Pancakes
Tuesday 13th February
2.00pm - 3.00pm
Food Hub = £3.50 per bag - Includes a FREE pancake lunch



Food Hubs
Tuesday 13th February & Wednesday 14th February
9.30am - 12.30pm
£5.00 per bag

Pancake Day
Tuesday 13th February

DON'T FORGET!

All food Hubs are open to all and there is no eligibility criteria.



Bassetlaw
Place-Based
Partnership

Nottingham Festival of Science & Curiosity





Science Busking Workshop
Langold Library
Tuesday 13th February
2pm and 3pm

Come and have a go with some weird and wacky science experiments made from household objects that make you go 'oohh!'.

Suitable for children aged 5-11
FREE
Bookable essential

Booking links for Inspire Library events at:
inspireculture.org.uk/fosac



Nottinghamshire County Council

delivered by



Inspire
Culture | Learning | Libraries



www.nottsfosac.co.uk

[@NottsFOSAC](https://twitter.com/NottsFOSAC)





Magnets Workshop with UKAEA
Workshop Library
Friday 16th February
9.30am, 10.30am, 11.30am, 1.30pm, 2.30pm, 3.30pm

Work with magnets and batteries to create small electromagnets which mimic the large powerful electromagnets that UKAEA use in fusion energy machines.

Suitable for children aged 7-11
FREE
Bookable essential

Booking links for Inspire Library events at:
inspireculture.org.uk/fosac



Nottinghamshire County Council

delivered by



Inspire
Culture | Learning | Libraries



www.nottsfosac.co.uk

[@NottsFOSAC](https://twitter.com/NottsFOSAC)





Bassetlaw
Place-Based
Partnership

Nottingham Festival of Science & Curiosity

The Bridge Skills Hub, 9 Bridge Pl, Worksop S80 1DT

NOTTINGHAM FESTIVAL of SCIENCE & CURIOSITY

Events at The Bridge Skills Hub

Tue 13th Feb - The Wonder of Space planetarium show

Bookable activity: 11am, 12noon, 1:30pm & 2:30pm

Tue 13th Feb - Exploring Electricity

Drop-in activities: 11am, 12noon, 12:30pm & 1:30pm

Tue 13th Feb - Bassetlaw Employer STEM Activities

Drop-in activities: 11am - 3pm

Tue 13th Feb - Star Makers: The Energy of Tomorrow

Bookable screenings: 4pm - 5:30pm & 7pm - 8:30pm

View more FREE Bassetlaw FOSAC events and book onto activities at: nottsfosac.co.uk



Bassetlaw
DISTRICT COUNCIL
— North Nottinghamshire —

Bassetlaw Museum, Amcott House, 40 Grove St, Retford DN22 6LD

NOTTINGHAM FESTIVAL of SCIENCE & CURIOSITY

Events at Bassetlaw Museum

Mon 12th Feb - Exploring Electricity

Drop-in activity: 10am - 12noon & 1pm - 3pm

Tue 13th Feb - Veolia Recycling and Craft

Drop-in activity: 10am - 12noon & 1pm - 3pm

Wed 14th Feb - Trelleborg Employer STEM Activities

Events start at: 11am, 12:30pm & 1:30pm

Thu 15th Feb - Experiment with Colour

Drop-in activity: 10am - 12noon & 1pm - 3pm

Fri 16th Feb - Lego Activity

Drop-in activity: 10am - 3pm

View more FREE Bassetlaw FOSAC events and book onto activities at: nottsfosac.co.uk



Bassetlaw
DISTRICT COUNCIL
— North Nottinghamshire —



Bassetlaw
Place-Based
Partnership

Clumber Park

Workshop S80 3AZ



National
Trust

Made for family adventures, Clumber Park has 3800 acres of parkland and woodland to explore, and over 20 miles of multi-use paths to enjoy on two legs, four legs, two wheels or more.

Join us this February and see how many of the '50 things before you're 11 3/4' activities you can cross off your list. There's even a '50 things to do when you're a little bit older' for adults to enjoy too.

From getting to know a tree and building a den, to creating wild art and making friends with a bug. There are so many adventures to be had, we're sure you'll have lots of fun connecting with nature.

Start your journey in our brand new '50 things' room, which opens on 10 February and can be found at the back of the Discovery Centre.

Join the team at Lake Brew in Hardwick village on Tuesday 13 & Wednesday 14 February from 10.30 for a 'Love a Bug' crafting session, making bug hotels for insects and mini beasts. No booking required.

Clumber's Cycle Hire will be open every day with last hire at 13.30.

Hire is on a first-come, first-served basis.



Bassetlaw
Place-Based
Partnership

Manton Events

Two fantastic events taking place in Manton this half-term!
Both free to attend and everyone is welcome.

Make a pancake, pot some peas and grow a pumpkin!

Pancakes



Peas



BCVS | 50th
Bassetlaw Community and Voluntary Service | Anniversary | 1973 - 2023

& Pumpkins!



Join us this Half Term for some pancake making,
pea potting and pumpkin planting!

Tuesday 13th February
10am - 12noon @
Manton Club, S80 2PU

Bring the children to make a pancake, talk to us about what you would like to make "batter" in your community and join From the Heart Charity to make a Valentine's Card and other crafts. Free to attend.



Wednesday 14th February
Growing Volunteers
10am - 12noon
Willow Community Gardens, S80 2UA

Come and join us at Willow Community Gardens to pot pumpkins and peas! There will also be a scavenger hunt for children, so come and join us in "growing" volunteers at Willow Gardens. Free to attend.



Find out more here: www.bcv.s.org.uk/manton



Bassetlaw
Place-Based
Partnership

Idle Valley

North Rd, Retford DN22 8RQ

This reserve consists of a beautiful network of lakes, wetland, grassland and scrub. It is home to a diverse range of wildlife and is recognised as one of the richest birding sites in the region. Look out for birds such as gadwall and little grebe in winter and breeding wading birds including little ringed plover and redshank in spring and summer.

**[www.nottinghamshirewildlife.org/
nature-reserves/idle-valley](http://www.nottinghamshirewildlife.org/nature-reserves/idle-valley)**



Bassetlaw
Place-Based
Partnership



Family Fun Swimming Times

Worksop Leisure Centre

Monday - 1.30pm - 3.00pm

Tuesday - 1.30pm - 3.00pm

Thursday - 1.30pm - 3.00pm



Retford Leisure Centre

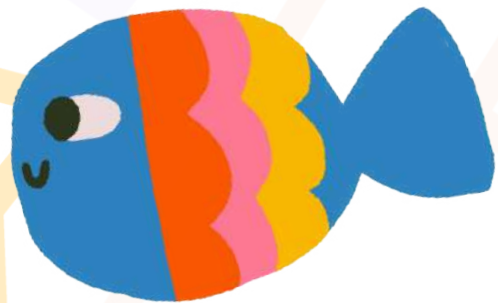
Monday - 1.30pm - 2.30pm

Tuesday - 1.30pm - 2.30pm

Tuesday - 1.30pm - 2.30pm

Wednesday - 1.30pm - 2.30pm

Friday - 1.30pm - 2.30pm



Bircotes Leisure Centre

Monday - 12.30pm - 2.00pm

Thursday - 12.30pm - 2.00pm

Friday - 12.30pm - 2.00pm



Bassetlaw
Place-Based
Partnership

Museum of the Horse

Market Pl, Tuxford, Newark NG22 0LA

Open Monday to Friday from 9am to 4.30pm and Saturday 9am-2pm.

Last entry one hour before closing.

Other times can sometimes be available for groups by appointment.

Entry is currently free but they would appreciate a donation depending on how much you think it is worth.



Bassetlaw
Place-Based
Partnership

Walks of Life Museum

33 Lincoln Rd, Tuxford, Newark NG22 0HR
www.walksoflifemuseum.org

The Walks of Life Museum is home to a unique collection of hand-pushed vehicles collected by the late Dorothy Harrison.

Uncover the history of these fascinating objects and roll the 'museum on wheels'.



Bassetlaw
Place-Based
Partnership

Play Parks and Open Spaces

The Canch

Memorial Avenue/Priorswell Road Worksop S80 2BU

King's Park

Chancery Lane, Retford, Nottinghamshire, DN22 6DF

Langold Country Park

Church Street, Langold, S81 9NW

Clumber Park, Worksop S80 3AZ



Bassetlaw
Place-Based
Partnership

From The Heart Charity



From The Heart Charity
Registered Charity No. 1174122



Spread A Little Love

Coffee Morning

EVERY MONDAY 10AM-12PM

FTHC OFFICE, 48 GATEFORD ROAD, S80 1EB

TEA OR COFFEE, BISCUITS, AND CHATS WITH OUR FRIENDLY VOLUNTEERS!

Everyone Welcome!



From The Heart Charity
Registered Charity No. 1174122



Spread A Little Love

JOIN US FOR

FTHC FUN FRIDAYS!

FREE ENTRY!

EVERY FRIDAY 10AM - 12PM

FTHC CHARITY OFFICE, 48 GATEFORD ROAD, WORKSOP, S80 1EB

COLOURING • CRAFTS • FUN!

COME ALONG AND JOIN IN THE FUN - ALL AGES WELCOME!

 /FROMTHEHEARTCHARITY  @FROMTHEHEARTCHARITY  @FTHCWORKSOP



Bassetlaw
Place-Based
Partnership

Savoy Cinema Kids Club



www.savoyworksop.co.uk

The Savoy Cinema Kids Club screenings take place on Saturday and Sunday (and every day in the school holidays) at 10.15am. Parents and children can enjoy a movie at the cinema for the incredible low price of just £2.75 each. Please note all adults must be accompanied by a child. You can easily spot Kids Club showings on the Savoy Cinema Worksop website, as they are always shown with an orange KC next to the performance time.

Tickets can be booked online. Film line-up is subject to change. Tickets will be available to book from around 6pm on the Monday before the date listed, except where that Monday is a bank holiday - in which case it'll be the Tuesday instead.



Bassetlaw
Place-Based
Partnership



Rockin Roller World - Harworth

Unit A, Harworth Business Park, Harworth,
United Kingdom, DN11 8DB



Fabulous February Half Term Activities



Tuesday 13th - 10am to 4pm - Pancake Paradise

Dress your own pancake with ice cream, whipped cream, edible glitter & other toppings.

Wednesday 14th - 10am to 4pm - Disney affairs of the Heart

Calling all Disney Fans - Celebrate your love affair with some of the best music from iconic Disney films and join in with fun themed games (11:30, 13:30 & 15:00)

Thursday 15th - 10am to 4pm - Skills & Skate

10am to 12 noon - improve your skating with some of our lead skaters on hand to help get you gliding, bubbling, cornering and even moving backwards (you don't have to come for the whole 2 hour session).

12 noon to 4pm general skate.



Friday 16th - 10am to 4pm - Fit for Friday

General skate day with a little skate fit thrown in every couple of hours for around 15 minutes. Child/beginner friendly circuit training to help gain confidence.

Great for big kids too (parents).



Bassetlaw
Place-Based
Partnership

LGBT+ History Month



Since 2004 LGBT+ History Month has been celebrated every February across the UK. The national month-long campaign, which is designed for everyone, focuses on LGBT+ history and heritage, how much progression has been made and the challenges that LGBT+ communities still face today.

LGBT+ History Month is for everyone to support and celebrate whether you work in health, education, the VCSE or business sector, or are a member of a network/social group or an individual.

Every year there is different theme of LGBT+ history.

The theme for LGBT+ 2024 History Month is 'Representation in Medicine' linking well to the importance of good health and wellbeing and the professionals who work hard to achieve this.

We have created an information and resources page in collaboration with LGBT+ Service Nottinghamshire, as the LGBT+ lead for Bassetlaw, and Bassetlaw Placed-Based Partnership.

Visit the Bassetlaw LGBT+ History Month
page here:
www.mentalhealthbassetlaw.org/lgbt-resources



We have also put together some activities on the next few pages that you can print off and do with your children during half term.



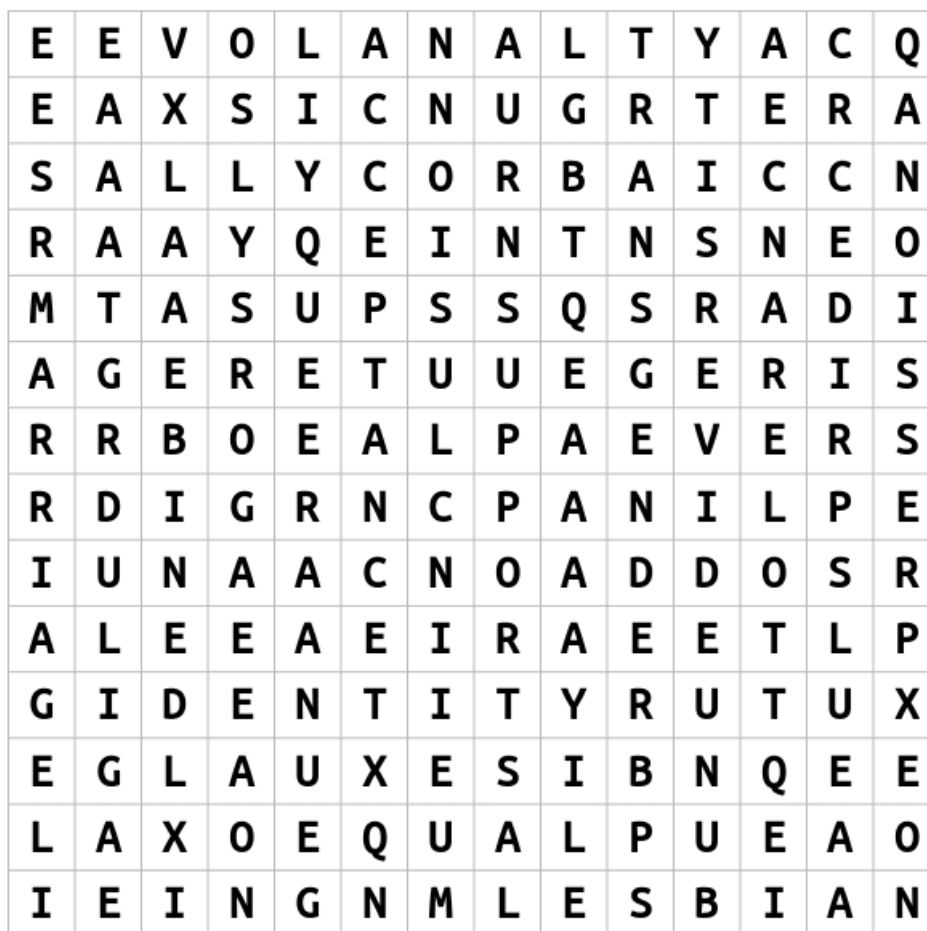
Bassetlaw
Place-Based
Partnership



LGBT+ History Month



LGBT+ Wordsearch

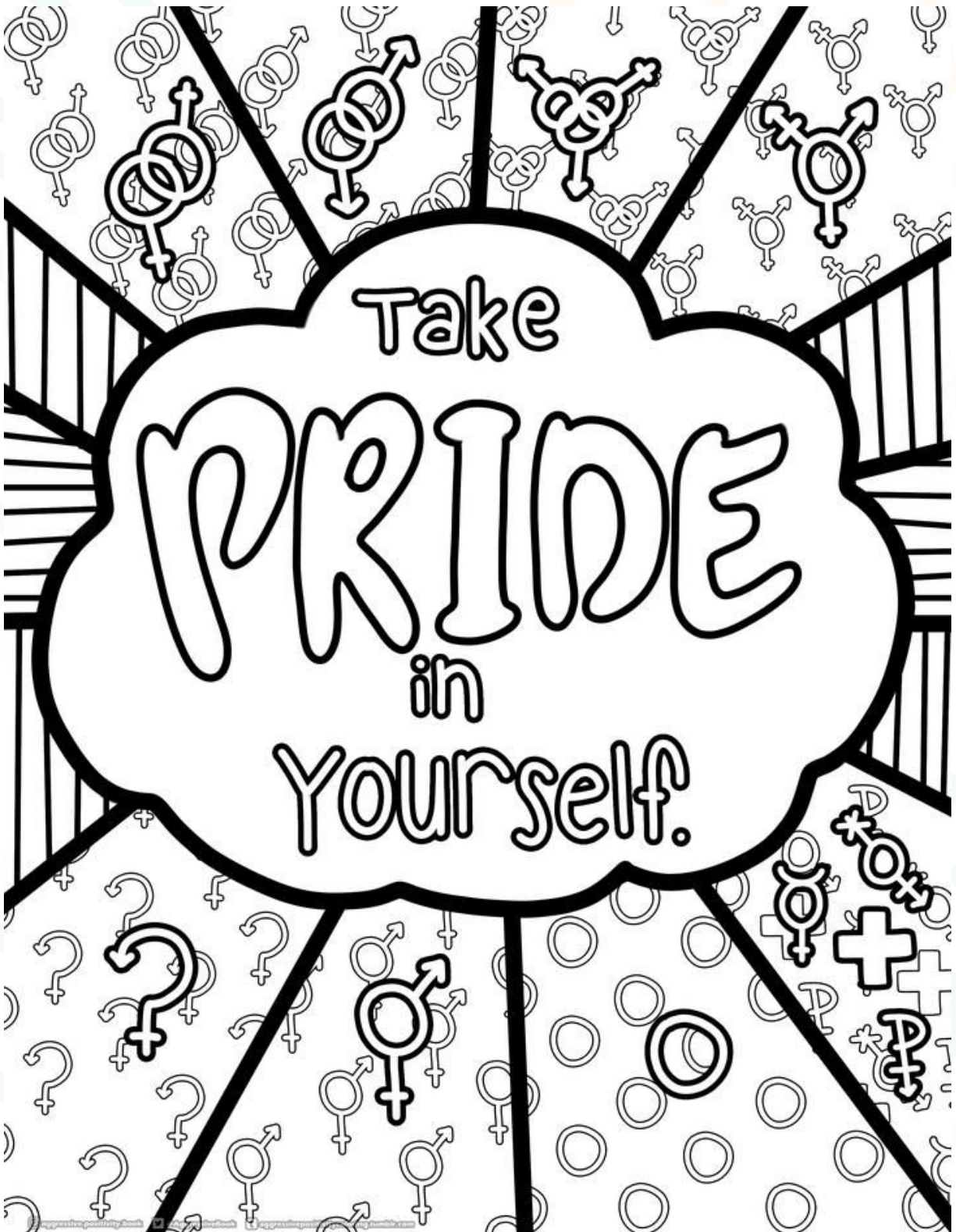


GAY
QUEER
TRANSGENDER
EXPRESSION
SUPPORT
EQUAL
ALLY
PRIDE
LOVE
TOLERANCE
DIVERSITY
BISEXUAL
MARRIAGE
LGBTQ
LESBIAN
ACCEPTANCE
INCLUSION
IDENTITY



Bassetlaw
Place-Based
Partnership

LGBT+ History Month

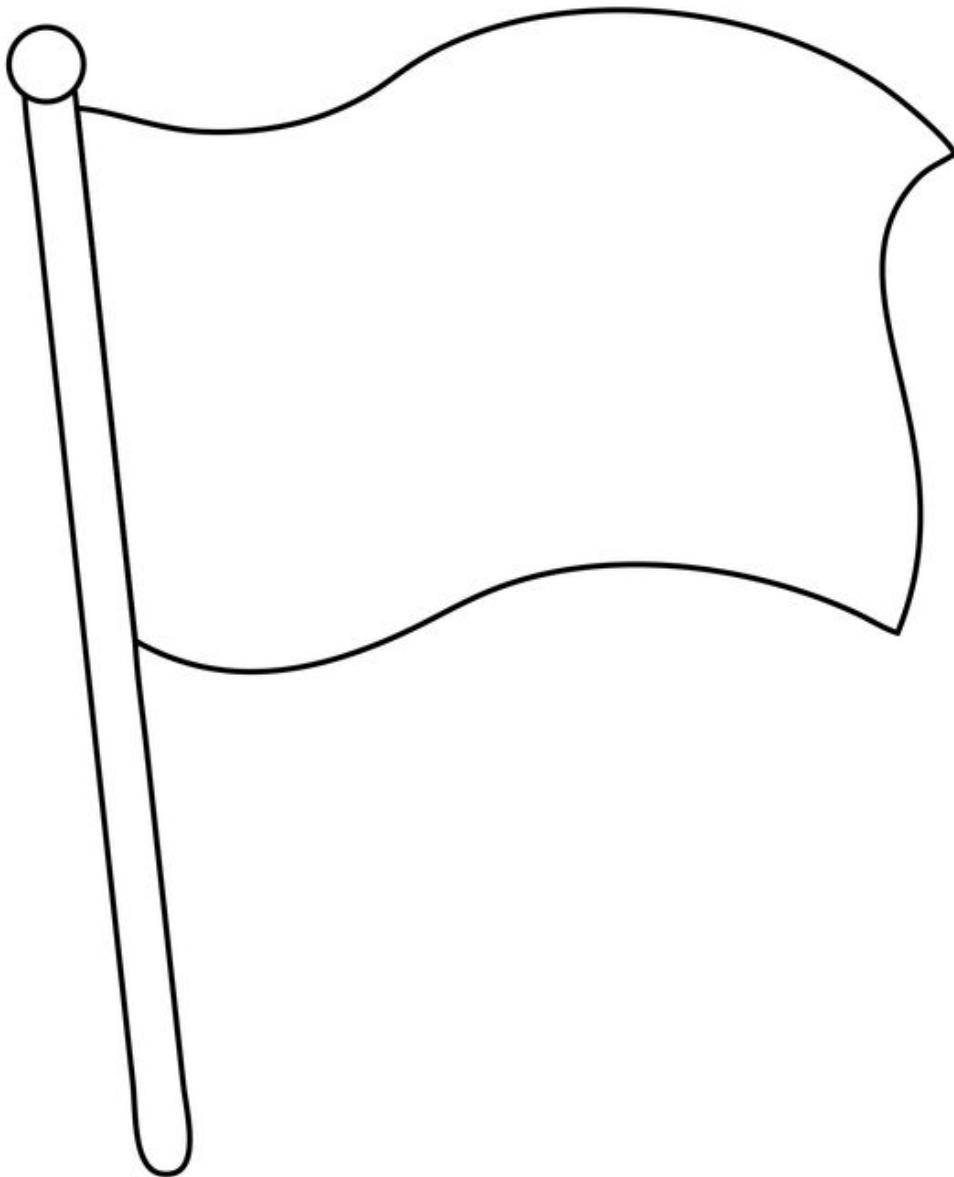


Bassetlaw
Place-Based
Partnership

LGBT+ History Month

Design your own flag.

**Please email any photos to bassetlawplace@bcvs.org.uk
- we would love to see your creations.**

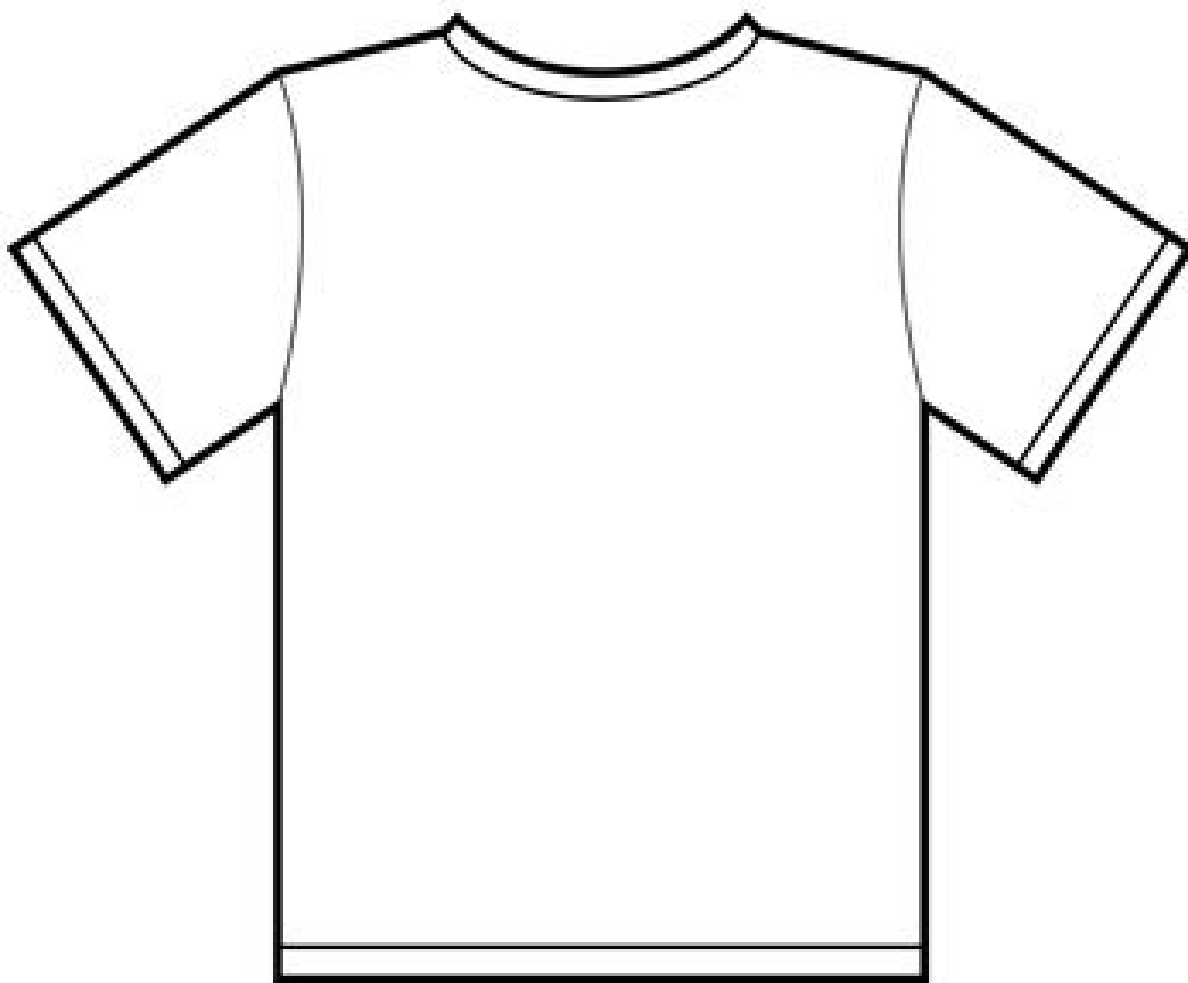


Bassetlaw
Place-Based
Partnership

LGBT+ History Month

Design your own t-shirt.

**Please email any photos to bassetlawplace@bcvs.org.uk
- we would love to see your creations.**



Bassetlaw
Place-Based
Partnership



**What if we
checked
our bodies
as much as
we
checked
our
phones?**



Visit the new
Bassetlaw
Cancer
information page
if you have any
worries or
concerns.



Scan Me

Phone Screen *VS* Cancer Screen
Only one could save your life

www.aurorawellbeing.org.uk/cancer-info

AURORA
Wellbeing Services



Bassetlaw
Place Based
Partnership

South Yorkshire and Bassetlaw
Integrated Care System
CANCER ALLIANCE



Bassetlaw
Place-Based
Partnership

Family Health



NHS
Nottingham and Nottinghamshire

Boost your immunity

If you are pregnant, it is important you top up your immunity. Vaccinations will help protect you and your baby from viruses such as Covid-19 and flu.

NottAlone

It's OK not to be OK

You are not alone.

Find local mental health advice and help for young people in Nottingham and Nottinghamshire.

nottalone.org.uk
#NottAlone



NHS
Nottingham and Nottinghamshire

Find out more about common children's health concerns and how to treat them on the NHS website



Bassetlaw
Place-Based
Partnership

Help & Support



Nottingham and
Nottinghamshire
Talking Therapies

Talking Therapies is available for adults aged 18 years or over who are registered with a GP in Nottingham and Nottinghamshire.

Simply self-refer to get started | www.notts-talk.co.uk



In Sam's Name

For the next In Sam's Name and In Sam's Name for Her meet ups and walks please visit:

www.insamsname.co.uk

Support for your mental health

NHS
Nottingham and
Nottinghamshire



Mental health crisis

Crisis Sanctuaries: **0115 844 1846**
Crisis Line: **0808 196 3779**
Text NOTTS to **85258**

Depression, anxiety, stress

Talking Therapies: **0333 188 1060**

Looking after yourself

Every Mind Matters website:
nhs.uk/every-mind-matters

Which health service should you use?

NHS

For common ailments and illnesses such as sore throat, grazed knee, diarrhoea or indigestion . Top tip: Keep a medicine cabinet at home stocked with items like pain relief, plasters and cold medicines.	SELF CARE AT HOME	
For advice on conditions such as headaches, aches and pains or an upset stomach . Top tip: Pharmacists recommend over-the-counter treatments and advise if you need to contact your GP practice.	PHARMACY	
If you have symptoms that don't go away, such as ear ache, back pain or ongoing health concerns . Top tip: Use online or phone consultations if possible, to save surgery appointments for those who need them most.	GP PRACTICE	
For urgent medical help that isn't an emergency . 111 can direct you to the right service such as Urgent Treatment Centre. Top tip: You can access 111 online at 111.nhs.uk	111.NHS.UK OR CALL 111	
For minor conditions such as sprains, strains, broken bones, minor burns and wounds . Attend an Urgent Treatment Centre at St Mary's Community Health Campus in Portsmouth, Gosport War Memorial Hospital or Petersfield Hospital.	URGENT TREATMENT CENTRE	
For life-threatening emergencies only such as loss of consciousness, severe chest pain, breathing difficulties, stroke or heavy bleeding that cannot be stopped. Our nearest Emergency Department is at Queen Alexandra Hospital.	EMERGENCY DEPARTMENT OR CALL 999	

"It's alright to
ask for help"

SAMARITANS

116 123



SCAN ME



Bassetlaw
Place-Based
Partnership

Help & Support



CONTACT:

www.lgbtplusnotts.org.uk
info@lgbtplusnotts.org.uk
01909 479191
07761 500169



The Kooth logo, featuring the word 'kooth' in a bold, lowercase, sans-serif font. The two 'o's are replaced by stylized white speech bubbles with black outlines, set against a light grey background.

www.kooth.com

The Talkzone logo, featuring the word 'talkzone' in a bold, lowercase, sans-serif font. The word is white and set within a blue oval shape.



Abbey Street, Worksop, Notts,
S80 2LA, United Kingdom
Tel: 01909 530943

Tel: 0330 822 4100
4pm till 11pm



Nottingham and
Nottinghamshire

Healthy Family Teams

[www.nottinghamshirehealthcare.nhs.uk/
healthy-family-teams](http://www.nottinghamshirehealthcare.nhs.uk/healthy-family-teams)



Bassetlaw
Place-Based
Partnership

Coming Soon



Move More in May is retuning in 2024 for another year of movement, memories and minions!

Keep your eyes peeled for a programme of activities and events throughout May to encourage as many people as possible to take part.

Join our the new facebook group to share your journey with others, find out about the latest news and events, and be in with the chance of winning prizes.



www.facebook.com/groups/mmimbassetlaw



Bassetlaw
Place-Based
Partnership

Coming Soon



SpongeFest Musical Festival is coming to Worksop on 25th May!

Tickets are on sale now, and all profits will be donated to In Sam's Name Charity.

Bassetlaw has THREE Pride Events to look forward to in July.

Harworth & Bircotes, Worksop, and Retford.

Save the Dates!



Bassetlaw
Place-Based
Partnership